

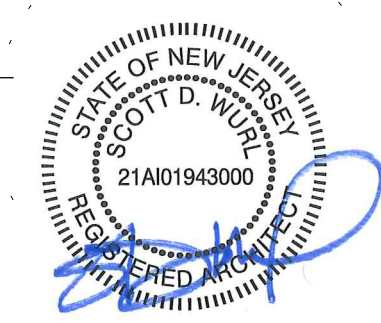
Issues
 PLANNING AND ZONING
 03/17/2020

Revisions

No.	Date	Description

DELIVERY STATION - DJZ6
 1800 LOWER ROAD
 LINDEN, NJ 07036

Sealing Professional
 Architect:
 Scott D. Wurl
 NJ License #19430
 Seal

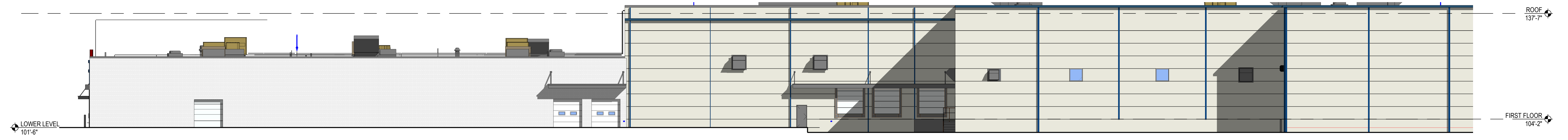


If this document is sealed and signed in a digital or electronic format and is received from someone other than the sealing professional identified in the document, you must contact the sealing professional in writing to validate authenticity of the document. The sealing professional disclaims the seal and signature and shall not be liable for any liability associated with it where the authenticity of any digital or electronic seal or signature has not been validated in this manner.

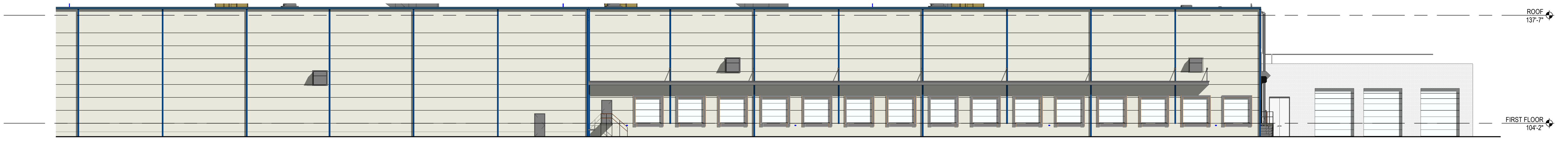
Job Number	83460043
Drawn By	Author
App'd By	JRV
Sheet Title	



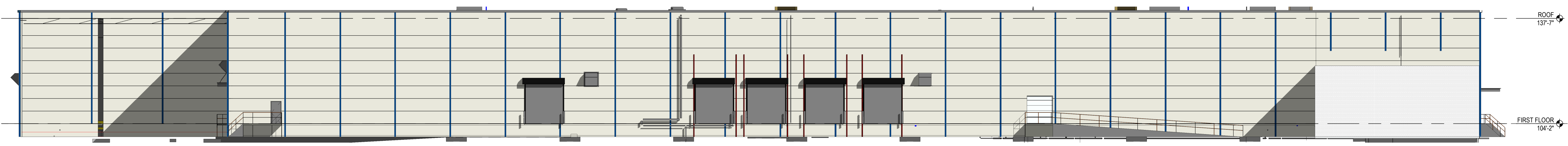
1 ELEVATION
 1/32" = 1'-0"



1A ELEVATION
 1/16" = 1'-0"



1B ELEVATION
 1/16" = 1'-0"



2 ELEVATION
 1/16" = 1'-0"

THIS DOCUMENT HAS BEEN PREPARED BY PROGRESSIVE ARCHITECTURE ENGINEERING, INC. AS AN INSTRUMENT OF SERVICE AND PROGRESSIVE ARCHITECTURE ENGINEERING, INC. SHALL RETAIN ALL COMMON LAW, STATUTORY AND OTHER RESERVED RIGHTS INCLUDING THE COPYRIGHT THEREIN.
 C:\Users\jrv\OneDrive\Documents\2021\83460043_DJZ6_Linden_NJ_ARCH-FULL SCOPE 2019_inch.rvt