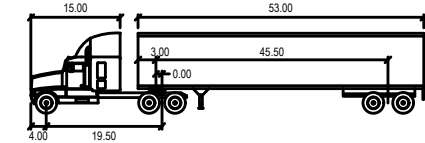
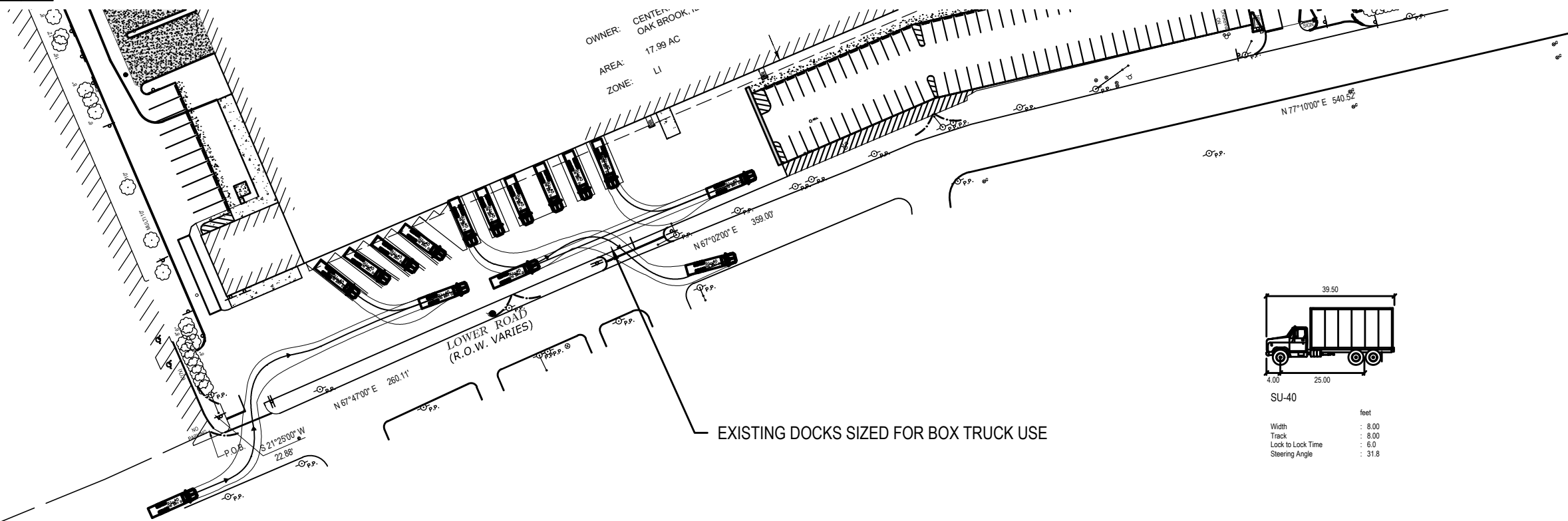
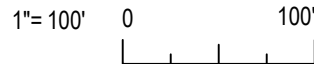


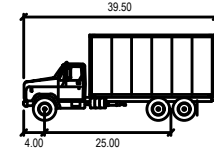
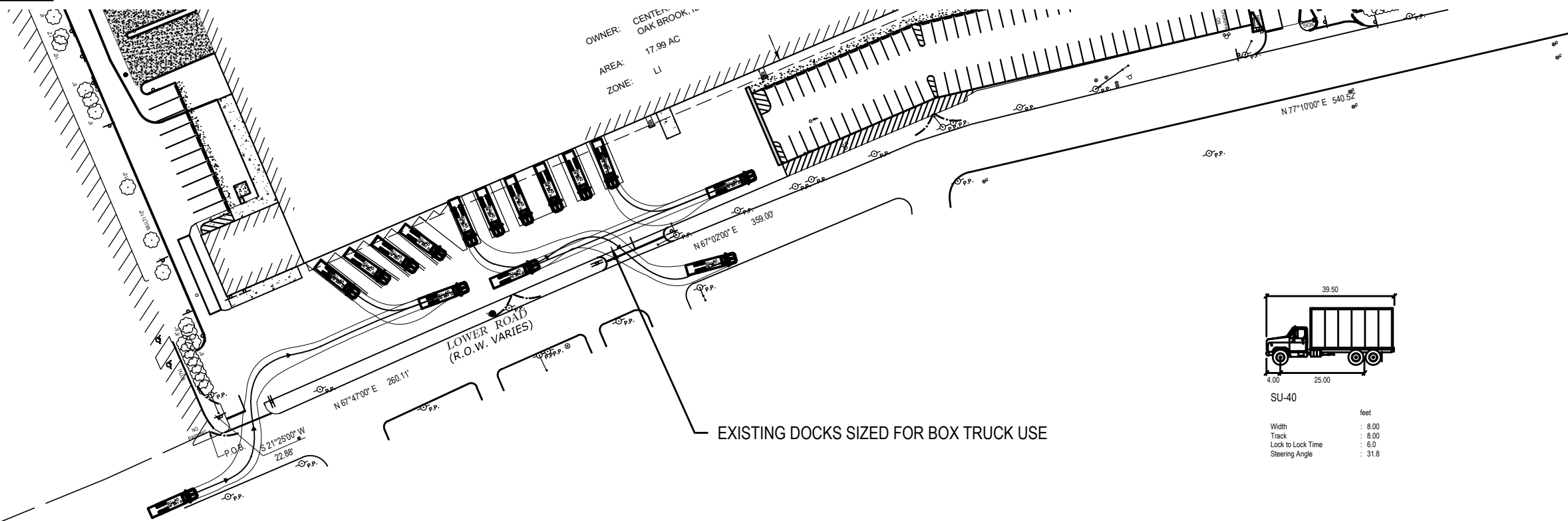
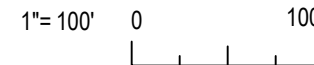
INITIAL TRUCK TURNING (3/17/2020 PLANS)



WB-67

| feet | |
|--------------------|--------|
| Tractor Width | : 8.00 |
| Tractor Track | : 8.50 |
| Trailer Width | : 8.50 |
| Trailer Track | : 8.50 |
| Lock to Lock Time | : 6.0 |
| Steering Angle | : 28.4 |
| Articulating Angle | : 75.0 |

PROPOSED TRUCK TURNING



SU-40

| feet | |
|-------------------|--------|
| Width | : 8.00 |
| Track | : 8.00 |
| Lock to Lock Time | : 6.0 |
| Steering Angle | : 31.8 |

ISSUANCES
 PLANNING AND ZONING
 06/26/2020

FILE NUMBER
 PROJECT MANAGER JRV
 PROFESSIONAL JPM
 DRAWN BY HDJ
 CHECKED BY