

N51°23'59" W 160.00'

N41°55'00" W (DEED)  
N51°23'59" W 160.00'

BLOCK 253  
LOT 40 & 41  
AREA=21,280 S.F.

SHARED COMMUTER PARKING

THESE 10 SPACES ARE RESERVED FOR USE BY CITY IN ACCORDANCE WITH GENERAL NOTE #5

275.00 FROM THE  
SOUTHWESTERLY S/L  
OF NORTH WOOD AVENUE

# W PRICE STREET

PLANNING | ARCHITECTURE | ENGINEERING | SURVEYING

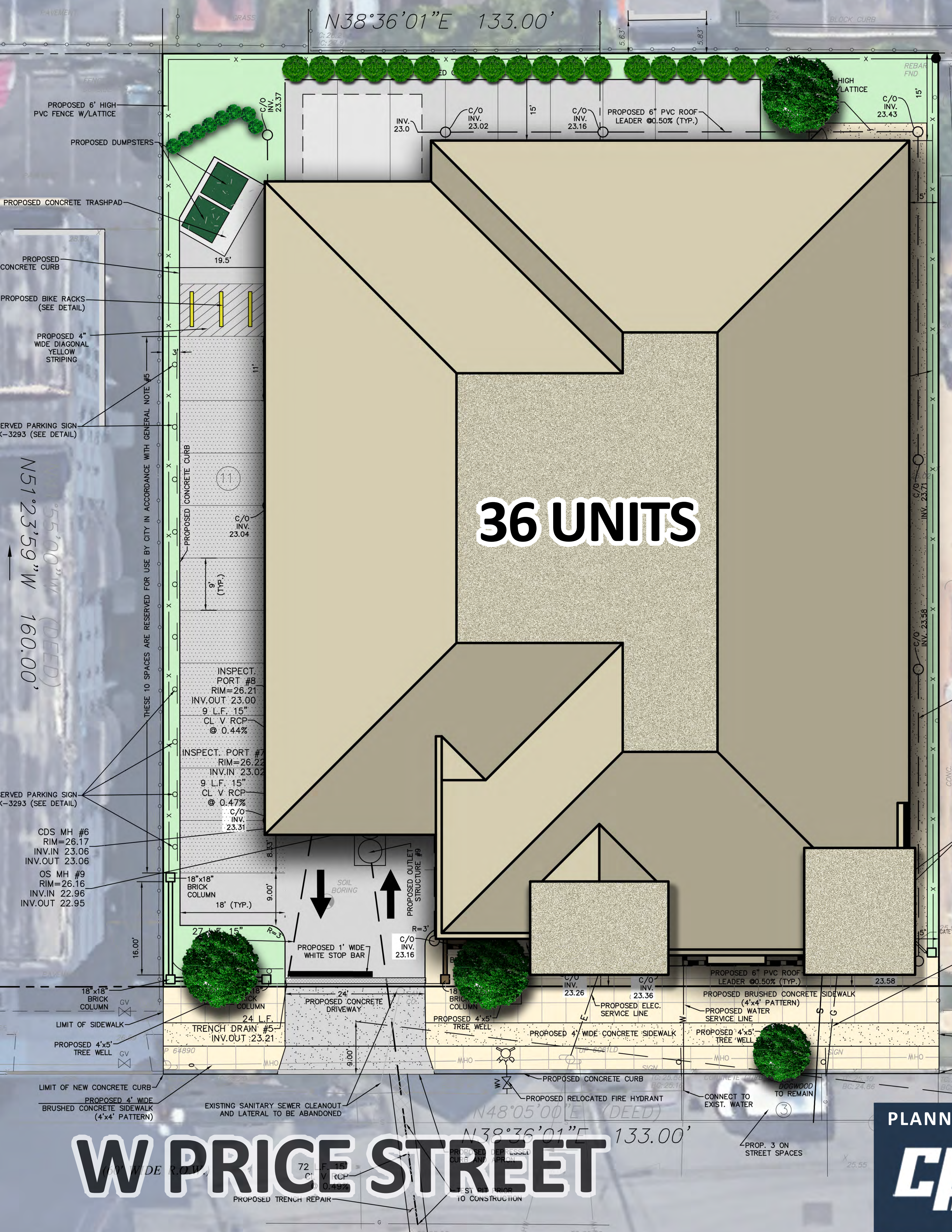
**CPL** CHESTER, PLOUSSAS, LISOWSKY PARTNERSHIP, LLC

33-37 WEST PRICE STREET  
LINDEN, NJ  
PARKING LEVEL CONCEPT  
SCALE: 1" = 10'  
19008 | 6-7-2020

95 Matawan Road | Second Floor | Matawan, NJ | www.cplpartnership.com | 732.566.0297



**36 UNITS**



275.00 FROM THE SOUTHWESTERLY S/L OF NORTH WOOD AVENUE

**W PRICE STREET**

PLANNING | ARCHITECTURE | ENGINEERING | SURVEYING

**CPL** CHESTER, PLOUSSAS, LISOWSKY PARTNERSHIP, LLC

33-37 WEST PRICE STREET  
LINDEN, NJ  
**OVERALL CONCEPT PLAN**  
SCALE: 1" = 10'  
19008 | 6-7-2020

95 Matawan Road | Second Floor | Matawan, NJ | www.cplpartnership.com | 732.566.0297



33-37 WEST PRICE STREET SOUTH

PLANNING | ARCHITECTURE | ENGINEERING | SURVEYING



CHESTER,  
PLOUSSAS,  
LISOWSKY  
PARTNERSHIP, LLC

33-37 WEST PRICE STREET SOUTH  
LINDEN, NJ  
**FRONT ELEVATION**  
APARTMENT BUILDING | SCALE: 1/8" = 1'-0"  
19008 | 05-12-2020

95 Matawan Road | Second Floor | Matawan, NJ | www.cplpartnership.com | 732.566.0297



PLANNING | ARCHITECTURE | ENGINEERING | SURVEYING

**CPL**  
partnership

CHESTER,  
PLOUSSAS,  
LISOWSKY  
PARTNERSHIP, LLC

33-37 WEST PRICE STREET SOUTH  
LINDEN, NJ  
**LEFT SIDE ELEVATION**  
APARTMENT BUILDING | SCALE: 1/8" = 1'-0"  
19008 | 05-12-2020

95 Matawan Road | Second Floor | Matawan, NJ | www.cplpartnership.com | 732.566.0297



PLANNING | ARCHITECTURE | ENGINEERING | SURVEYING



CHESTER,  
PLOUSSAS,  
LISOWSKY  
PARTNERSHIP, LLC

33-37 WEST PRICE STREET SOUTH  
LINDEN, NJ  
**REAR ELEVATION**  
APARTMENT BUILDING | SCALE: 1/8" = 1'-0"  
19008 | 05-12-2020

95 Matawan Road | Second Floor | Matawan, NJ | www.cplpartnership.com | 732.566.0297



PLANNING | ARCHITECTURE | ENGINEERING | SURVEYING



CHESTER,  
PLOUSSAS,  
LISOWSKY  
PARTNERSHIP, LLC

33-37 WEST PRICE STREET SOUTH  
LINDEN, NJ  
**RIGHT SIDE ELEVATION**  
APARTMENT BUILDING | SCALE: 1/8" = 1'-0"  
19008 | 05-12-2020

95 Matawan Road | Second Floor | Matawan, NJ | [www.cplpartnership.com](http://www.cplpartnership.com) | 732.566.0297