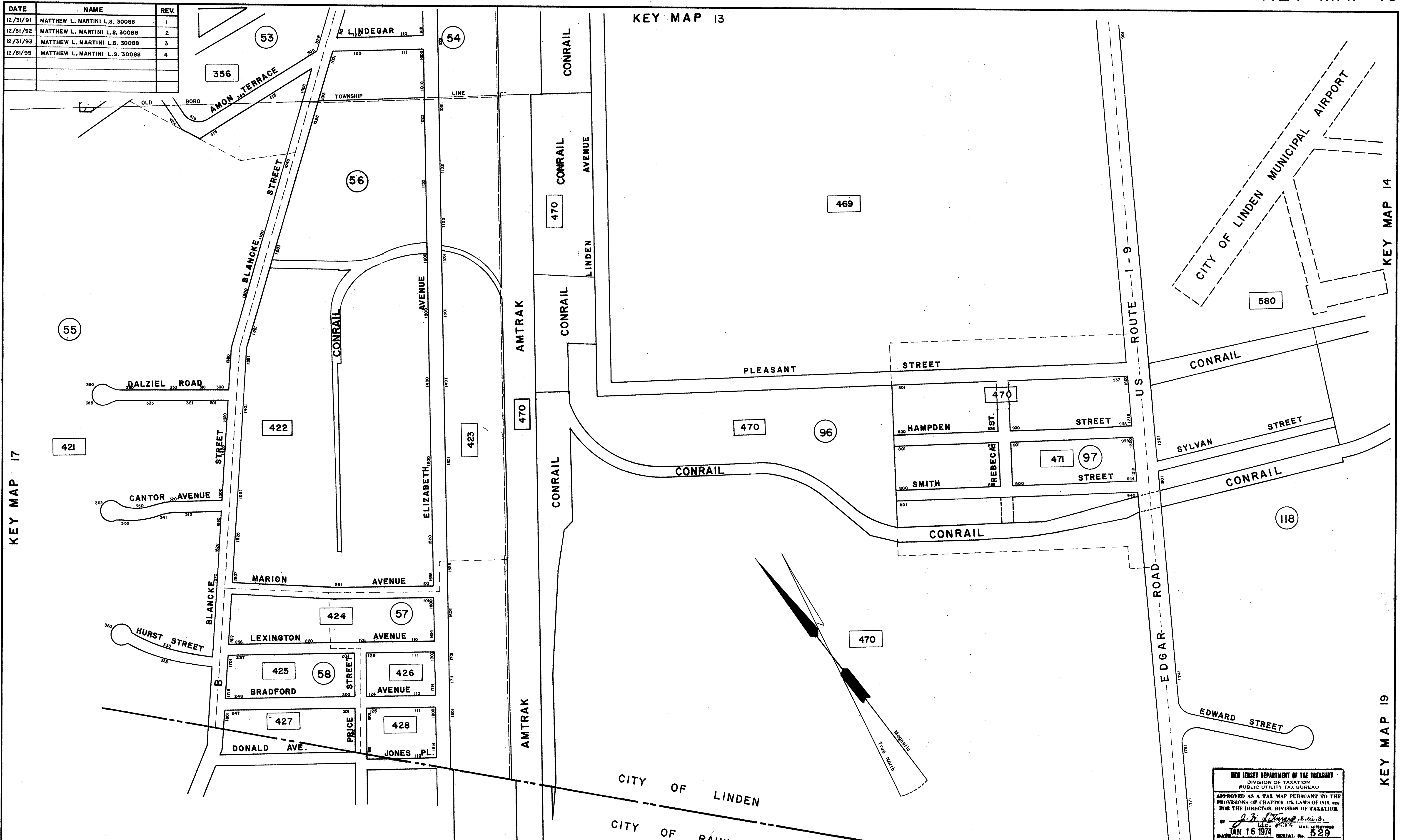


DATE	NAME	REV.
12/31/91	MATTHEW L. MARTINI L.S. 30088	1
12/31/92	MATTHEW L. MARTINI L.S. 30088	2
12/31/93	MATTHEW L. MARTINI L.S. 30088	3
12/31/95	MATTHEW L. MARTINI L.S. 30088	4



KEY MAP 17

KEY MAP 13

KEY MAP 14

KEY MAP 19

LEGEND
 ○ DETAIL SHEET NUMBER
 □ BLOCK NUMBER
 - - - SHEET LIMIT

REV.	DATE	DESCRIPTION	BY
1	1/18/2017	UPDATED SHEET LIMITS FOR 56-58 S.M.V.	

I HEREBY CERTIFY THAT THIS MAP AS NOTED IN REVISION BLOCK HAS BEEN REVISED UNDER MY IMMEDIATE SUPERVISION, AND COMPLIES WITH THE LAWS OF THE STATE OF NEW JERSEY.
Matthew L. Martini
 MATTHEW L. MARTINI, PROFESSIONAL LAND SURVEYOR L.C. No. 30088

CERTIFIED to the City of Linden that the block & lot numbers, title blocks & sheet numbers are in accordance with Agreement dated February 13, 1973.
Paul J. Emilius
 N.J. Lic. Land Surveyor No. 11363

NEW JERSEY DEPARTMENT OF THE TREASURY
 DIVISION OF TAXATION
 PUBLIC UTILITY TAX BUREAU
 APPROVED AS A TAX MAP PURSUANT TO THE PROVISIONS OF CHAPTER 126, LAWS OF 1963, AND THE DIRECTOR, DIVISION OF TAXATION.
John A. Ziemian
 JOHN A. ZIEMIAN, STATE SUPERVISOR
 DATE: JAN 16 1974 SERIAL No. 529

TAX MAP
 CITY OF LINDEN
 UNION COUNTY, NEW JERSEY
 SCALE: 1"=200' DATE: FEBRUARY 1973
 JOHN A. ZIEMIAN - CITY ENGINEER
 THOMAS J. STRAPP - ASST. CITY ENGINEER

DRAFTING ONLY UPDATED BY PAUL J. EMILIUS & ASSOCIATES