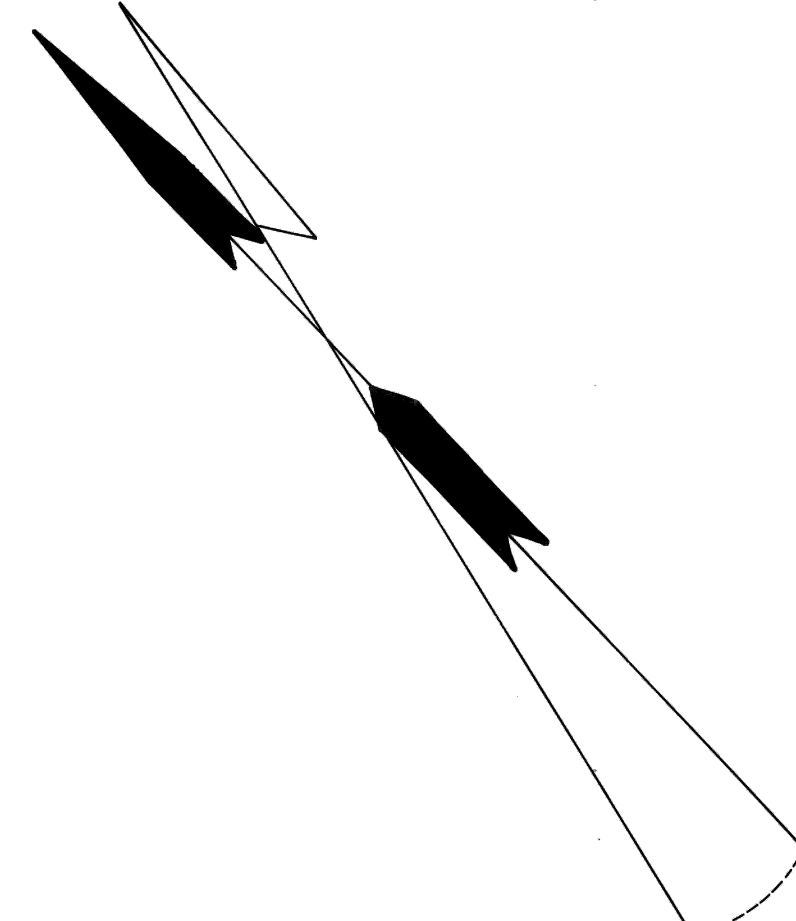
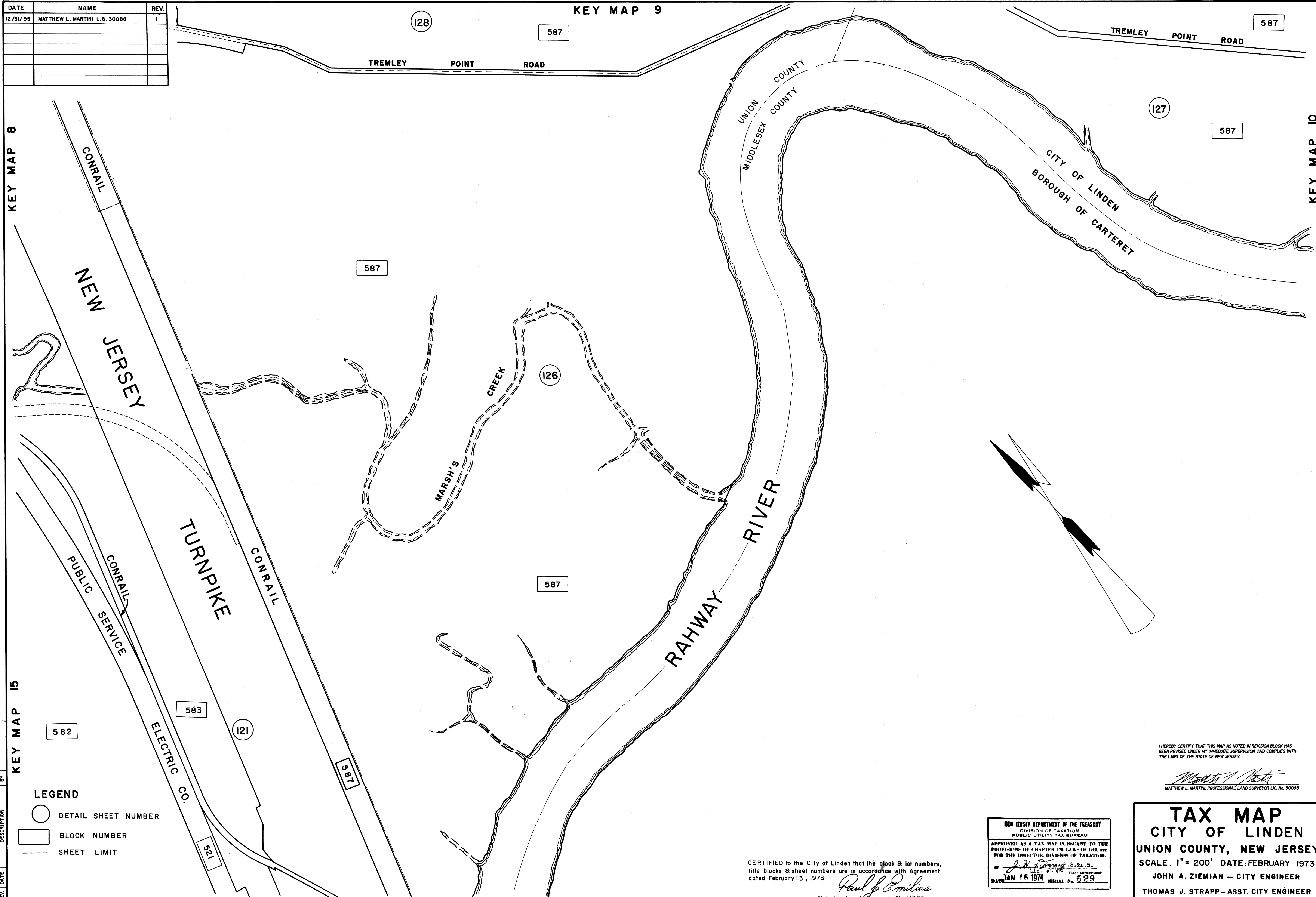


DATE	NAME	REV.
12/31/95	MATTHEW L. MARTINI L.S. 30088	1

KEY MAP 9

KEY MAP 8

KEY MAP 10



- LEGEND**
- DETAIL SHEET NUMBER
  - BLOCK NUMBER
  - - - SHEET LIMIT

REV.	DATE	DESCRIPTION	BY

I HEREBY CERTIFY THAT THIS MAP AS NOTED IN REVISION BLOCK HAS BEEN REVISED UNDER MY IMMEDIATE SUPERVISION, AND COMPLIES WITH THE LAWS OF THE STATE OF NEW JERSEY.

*Matthew L. Martini*  
MATTHEW L. MARTINI, PROFESSIONAL LAND SURVEYOR LIC. NO. 30088

CERTIFIED to the City of Linden that the block & lot numbers, title blocks & sheet numbers are in accordance with Agreement dated February 13, 1975

*Paul J. Emilius*  
N.J. Lic. Land Surveyor No. 11363

NEW JERSEY DEPARTMENT OF THE TREASURY  
DIVISION OF TAXATION  
PUBLIC UTILITY TAX BUREAU  
APPROVED AS A TAX MAP PURSUANT TO THE PROVISIONS OF CHAPTER 125, LAW OF 1913, ETC. FOR THE DIRECTOR, DIVISION OF TAXATION.  
BY *John A. Ziemian*, S.E.C., S.  
DATE: JAN 16 1974 SERIAL No. 529

**TAX MAP**  
CITY OF LINDEN  
UNION COUNTY, NEW JERSEY  
SCALE: 1" = 200' DATE: FEBRUARY 1973  
JOHN A. ZIEMIAN - CITY ENGINEER  
THOMAS J. STRAPP - ASST. CITY ENGINEER

DRAFTING ONLY UPDATED BY PAUL J. EMILIUS & ASSOCIATES