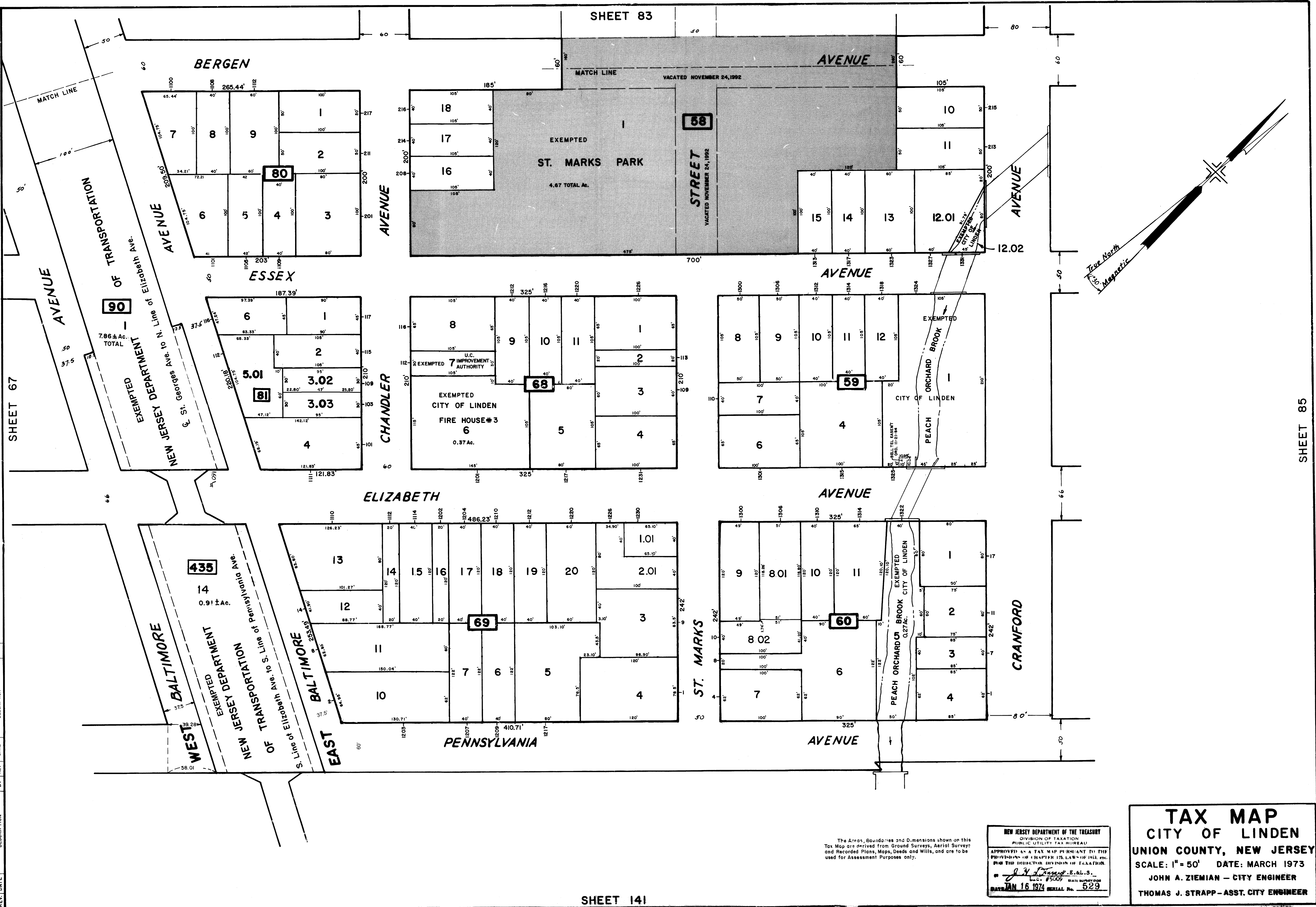


- 7 450' LOT 14
- 6 450' Block 90 Lot 1
- 5 450' Block 95 Lot 7
- 4 1/31/06 BLOCK 60 LOTS 3 & 5
- 3 3/16/04 BLOCK 81 LOTS 3 & 5
- 2 8/97 Block 81 Lot 6
- 1 10/19/94 BLOCK 90 LOT 14

REV.	DATE	DESCRIPTION	BY
1	10/19/94	BLOCK 90 LOT 14	S.M.Y.
2	8/97	Block 81 Lot 6	S.M.Y.
3	3/16/04	BLOCK 81 LOTS 3 & 5	S.M.Y.
4	1/31/06	BLOCK 60 LOTS 3 & 5	S.M.Y.
5	10/2/06	BLOCK 60 LOTS 1 & 2	R.S.
6	4/5/09	Block 95 Lot 7	R.S.
7	4/5/09	Block 90 Lot 14	R.S.



The Areas, Boundaries and Dimensions shown on this Tax Map are derived from Ground Surveys, Aerial Surveys and Recorded Plans, Maps, Deeds and Wills, and are to be used for Assessment Purposes only.

NEW JERSEY DEPARTMENT OF THE TREASURY  
 DIVISION OF TAXATION  
 PUBLIC UTILITY TAX BUREAU  
 APPROVED AS A TAX MAP PRESENTED TO THE COMMISSIONERS OF TAXATION BY THE CITY OF LINDEN  
 IN THE DIVISION OF TAXATION  
 J. J. ... E. & L. S.  
 L.A.C. # 5009 STATE SUPERVISOR  
 DATE: JAN 16 1974 SERIAL No. 529

**TAX MAP**  
**CITY OF LINDEN**  
 UNION COUNTY, NEW JERSEY  
 SCALE: 1" = 50' DATE: MARCH 1973  
 JOHN A. ZIEMIAN - CITY ENGINEER  
 THOMAS J. STRAPP - ASST. CITY ENGINEER