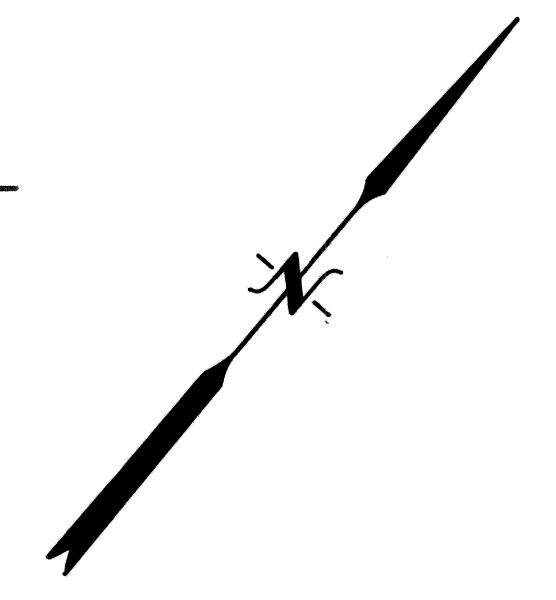
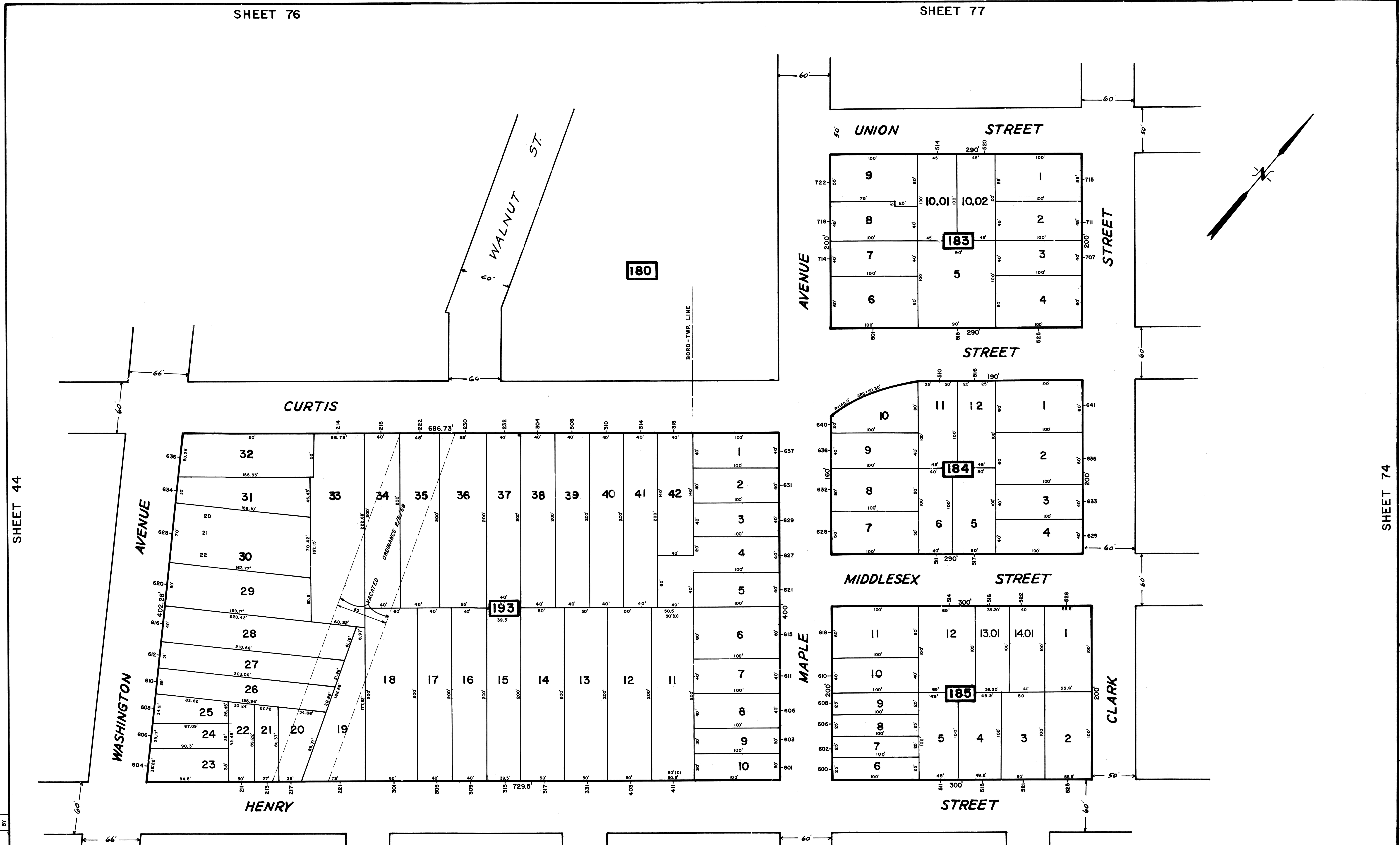


SHEET 76

SHEET 77



REV.	DATE	DESCRIPTION	BY
2	5/10/05	BLOCK 185 LOTS 13 & 14	R.C.S.
1	4/29/04	BLOCK 183 LOT 10	R.C.S.

SHEET 62

SHEET 63

SHEET 74

The Areas, Boundaries and Dimensions shown on this Tax Map are derived from Ground Surveys, Aerial Surveys and Recorded Plans, Maps, Deeds and Wills, and are to be used for Assessment Purposes only.

NEW JERSEY DEPARTMENT OF THE TREASURY
 DIVISION OF TAXATION
 PUBLIC UTILITY TAX BUREAU
 APPROVED AS A TAX MAP PURSUANT TO THE
 PROVISIONS OF PARAGRAPH 175, LAW OF 1912, P.L.
 1912, CHAPTER 119, AS AMENDED.
 BY *J. H. Strapp, E.S., S.*
 L.L.C. #5000 STATE SUPERVISOR
 DATE JAN 16 1974 SERIAL No. 529

TAX MAP
CITY OF LINDEN
 UNION COUNTY, NEW JERSEY
 SCALE: 1" = 50' DATE: MARCH 1973
 JOHN A. ZIEMIAN - CITY ENGINEER
 THOMAS J. STRAPP - ASST. CITY ENGINEER