

SHEET 60

SHEET 64

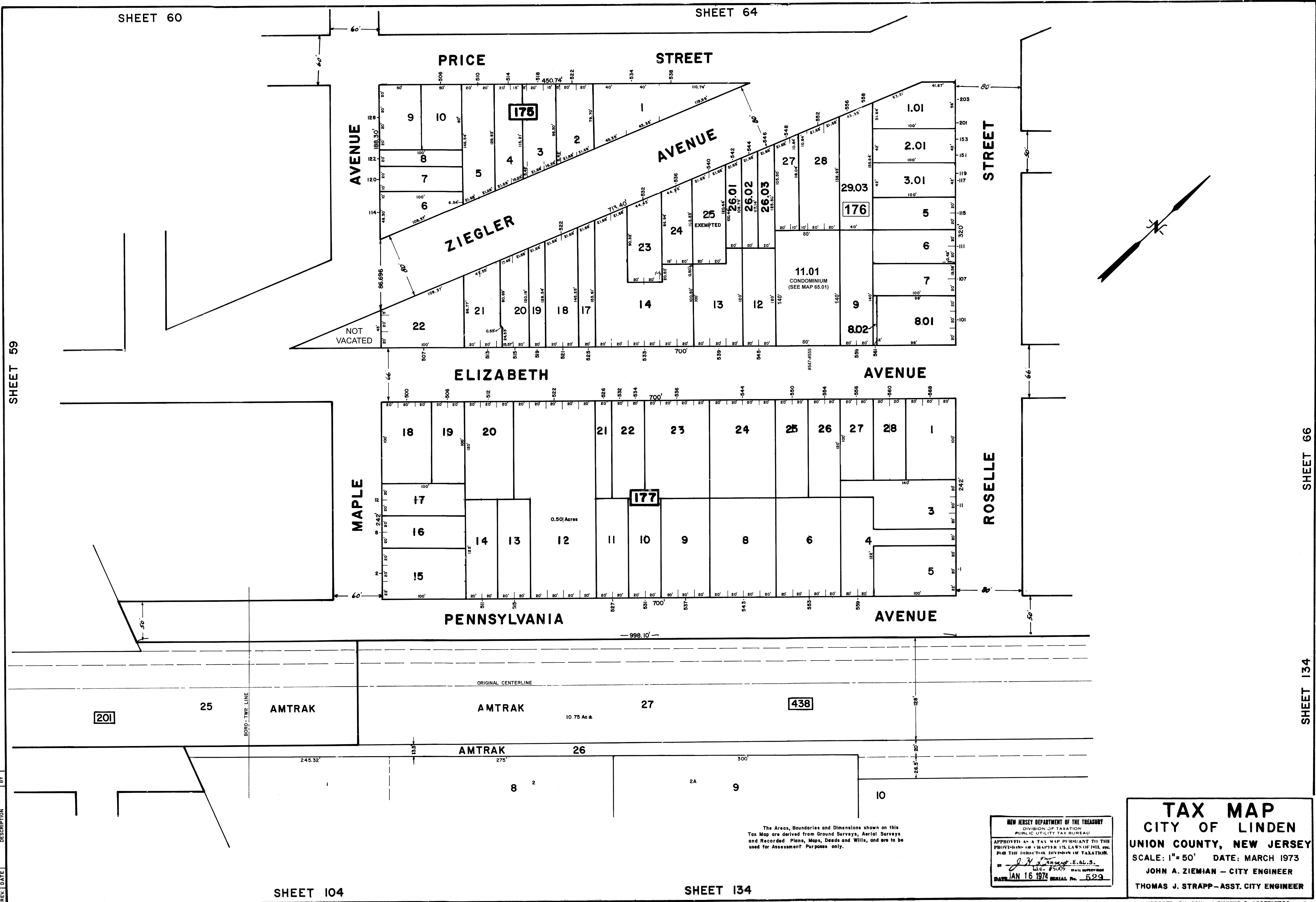
SHEET 59

SHEET 66

SHEET 134

SHEET 104

SHEET 134



REV.	DATE	DESCRIPTION	BY
3	10/15/78	B 176, L 1101 - CONDO NOTE	CEA
2	8/1/79	Block 176, Lot 175	RS
1	2/2/78	Block 176 Lots 1, 2, 3, 4, 5, 6, 7, 8, 9, 10, 11, 12, 13, 14, 15, 16, 17, 18, 19, 20, 21, 22, 23, 24, 25, 26, 27, 28, 29, 30	RS

The Areas, Boundaries and Dimensions shown on this Tax Map are derived from Ground Surveys, Aerial Surveys and Recorded Plans, Maps, Deeds and Wills, and are to be used for Assessment Purposes only.

NEW JERSEY DEPARTMENT OF THE TREASURY  
 DIVISION OF TAXATION  
 PUBLIC UTILITY TAX BUREAU  
 APPROVED AS A TAX MAP PURSUANT TO THE PROVISIONS OF CHAPTER 175, LAWS OF 1911, ETC. FOR THE DIRECTOR, DIVISION OF TAXATION.  
*J. H. ...*  
 Lic. #5005  
 DATE: JAN 16 1974 SERIAL No. 529

**TAX MAP**  
 CITY OF LINDEN  
 UNION COUNTY, NEW JERSEY  
 SCALE: 1"=50' DATE: MARCH 1973  
 JOHN A. ZIEMIAN - CITY ENGINEER  
 THOMAS J. STRAPP - ASST. CITY ENGINEER