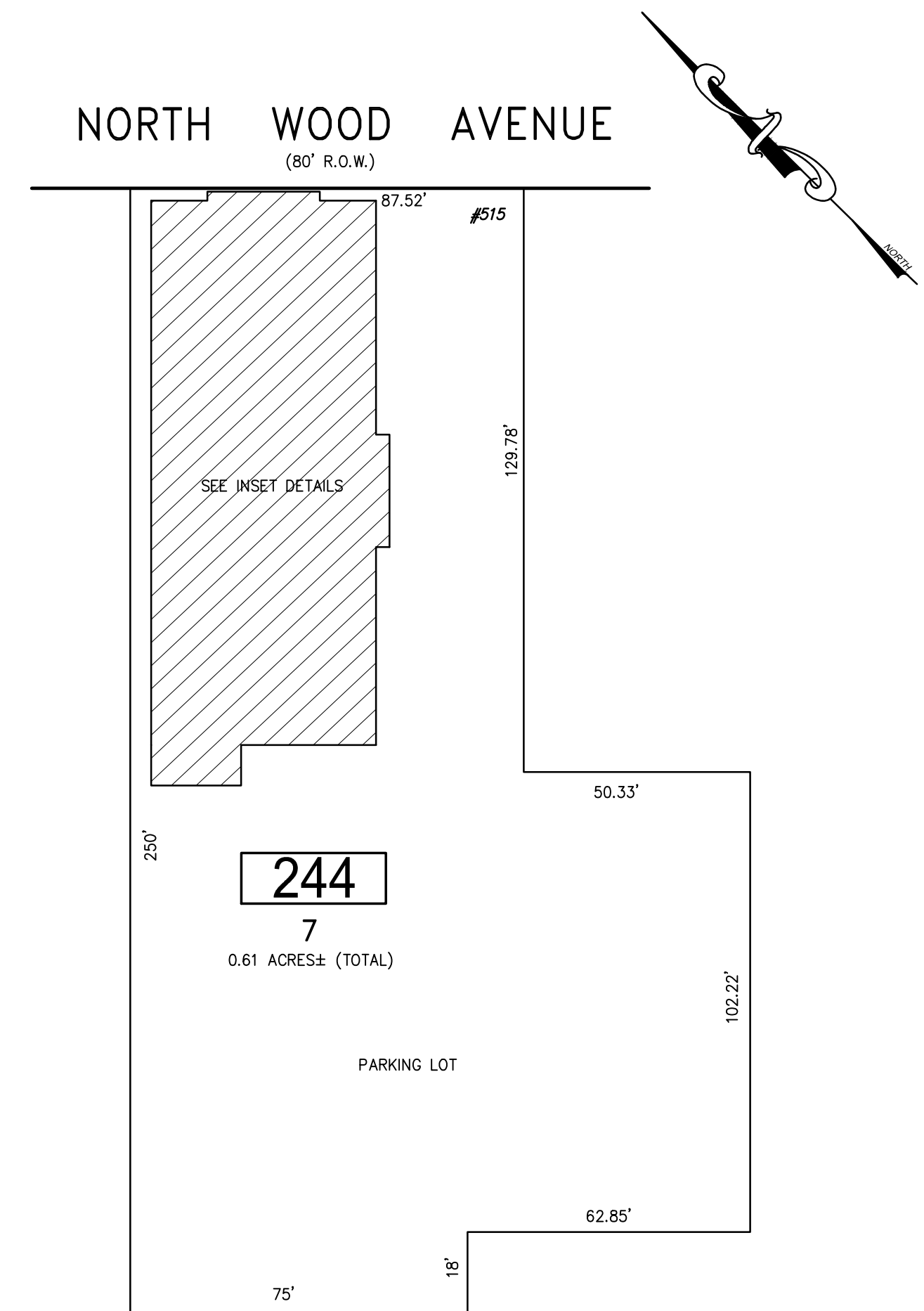


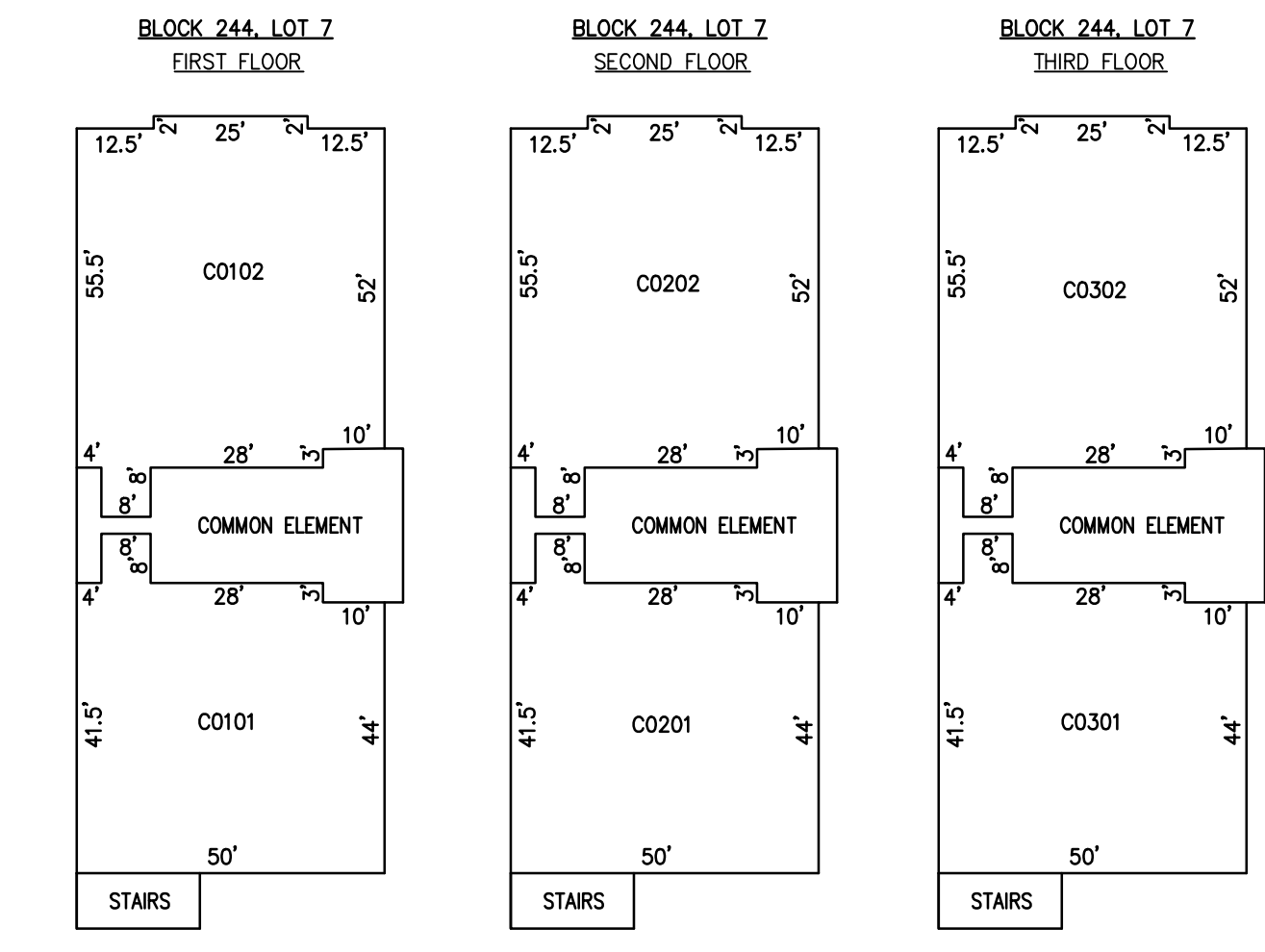
REVISIONS		
DATE	NAME	NO.

NOTE:
THIS SHEET HAS BEEN DRAWN USING COMPUTER AIDED DRAFTING/DESIGN (CAD/D) AND COORDINATE GEOMETRY (COGO).



PLAN
SCALE: 1"=20'

BLOCK 244, LOT 7
VPB CONDOMINIUMS
515 NORTH WOOD AVE



DETAILS
SCALE: 1"=20'

CONDO QUALIFIER	SQUARE FOOTAGE
C0101	2,428 SF.
C0102	2,700 SF.
C0201	2,428 SF.
C0202	2,700 SF.
C0301	2,428 SF.
C0302	2,700 SF.

BLOCK 244, LOT 7
SEE SHEET 47

TAX MAP
CITY OF LINDEN

UNION COUNTY NEW JERSEY
SCALE: NOTED DATE: 5-1-2018
CHARLES E. ADAMSON N.J.P.L.S. LIC. NO. 42627

RVE 1901 **REMINGTON & VERNICK ENGINEERS**
ONE HARMON PLAZA, SUITE 210, SECAUCUS, NJ 07094
(201) 624-2137, FAX (201) 624-2136, WEB SITE ADDRESS: WWW.RVE.COM
Certificate of Authorization: 24 GA 28003300
—ENGINEERING EXCELLENCE—