

SHEET 35 STREET
 STREET
 LAURITA STREET
 MILTONIA STREET
 STREET
 STREET

GIBBONS

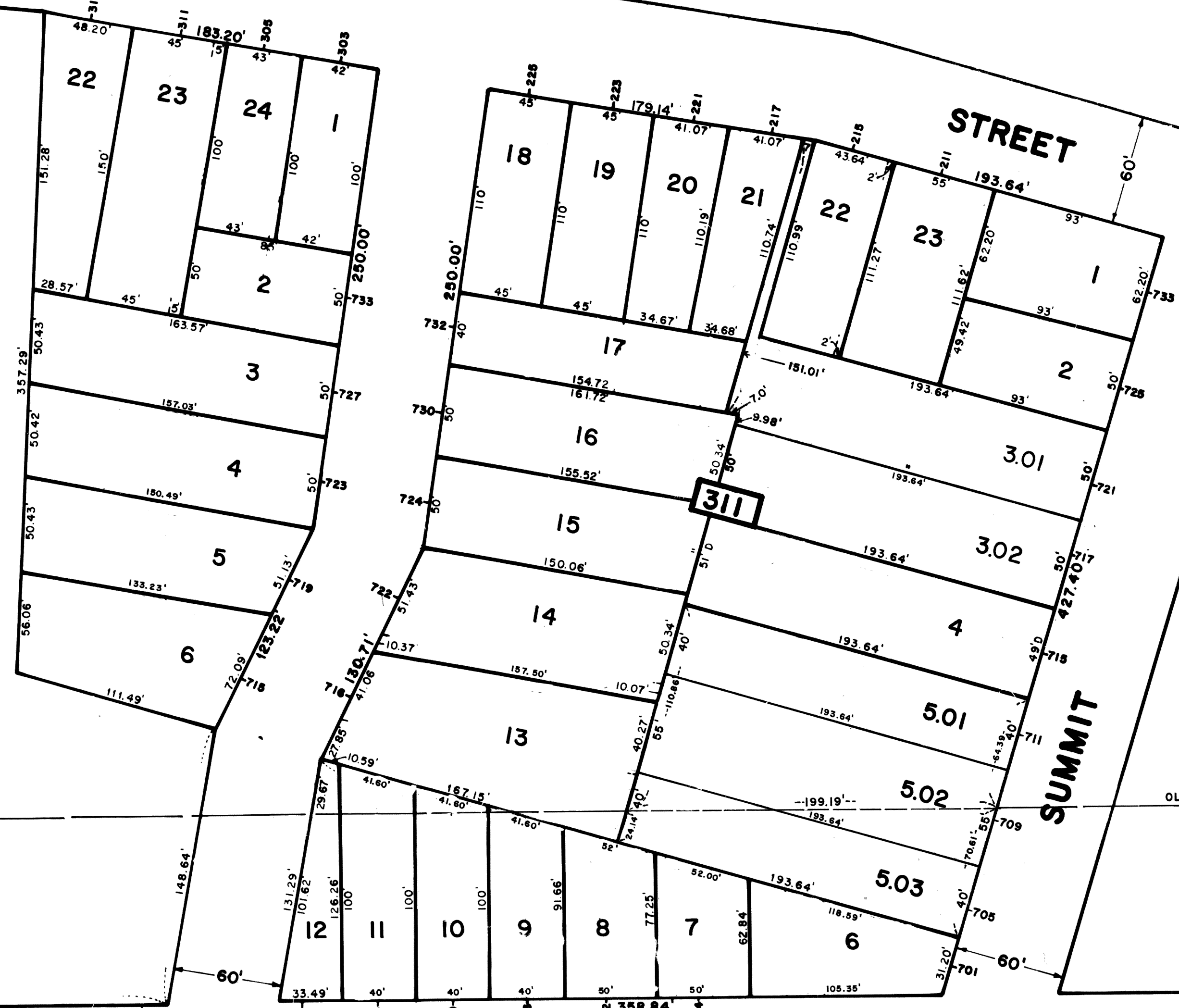
- 756 40 21
- 754 20 20
- 750 40 19
- 748 40 18
- 744 40 17
- 740 40 16
- 738 40 15
- 730 40 14
- 726 40 13
- 724 40 12
- 718 40 11
- 710 40 10
- 708 40 9
- 700 40 8

343

EDWARD R. COOPER FIELD
 BOARD OF EDUCATION
 EXEMPTED

7
 7.583 Ac.

BOARD OF EDUCATION



311

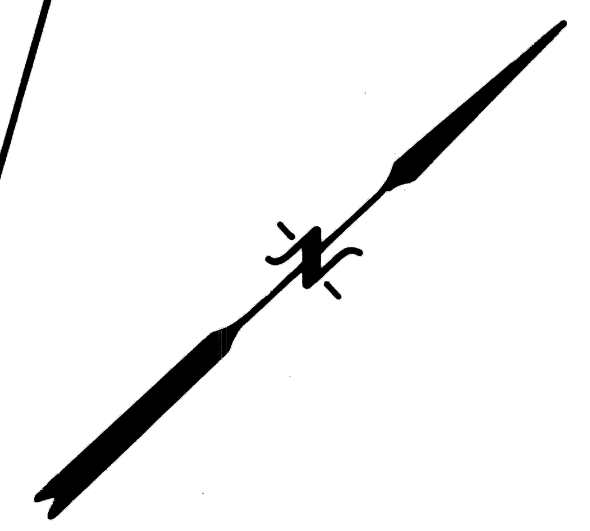
SUMMIT

OLD BORO-TWP. LINE

SHEET 36

CURTIS

LINDEGAR
 LAURITA ST.
 MILTONIA ST.
 DEWITT
 LAFAYETTE ST.
 STREET



REV.	DATE	DESCRIPTION	BY

The Areas, Boundaries and Dimensions shown on this Tax Map are derived from ground Surveys, Aerial Surveys and Recorded Plans, Maps, Records, Deeds, Etc., and are to be used for Assessment Purposes only.

NEW JERSEY DEPARTMENT OF THE TREASURY
 DIVISION OF TAXATION
 PUBLIC UTILITY TAX BUREAU
 APPROVED AS A TAX MAP PURSUANT TO THE PROVISIONS OF CHAPTER 125, LAWS OF 1973, BY THE HONORABLE DIRECTOR OF TAXATION
 BY [Signature] STATE ENGINEER
 DATE JAN 16 1973 SERIAL No. 529

TAX MAP
CITY OF LINDEN
 UNION COUNTY, NEW JERSEY
 SCALE: 1" = 50' DATE: MARCH 1973
 JOHN A. ZIEMIAN - CITY ENGINEER
 THOMAS J. STRAPP - ASST. CITY ENGINEER