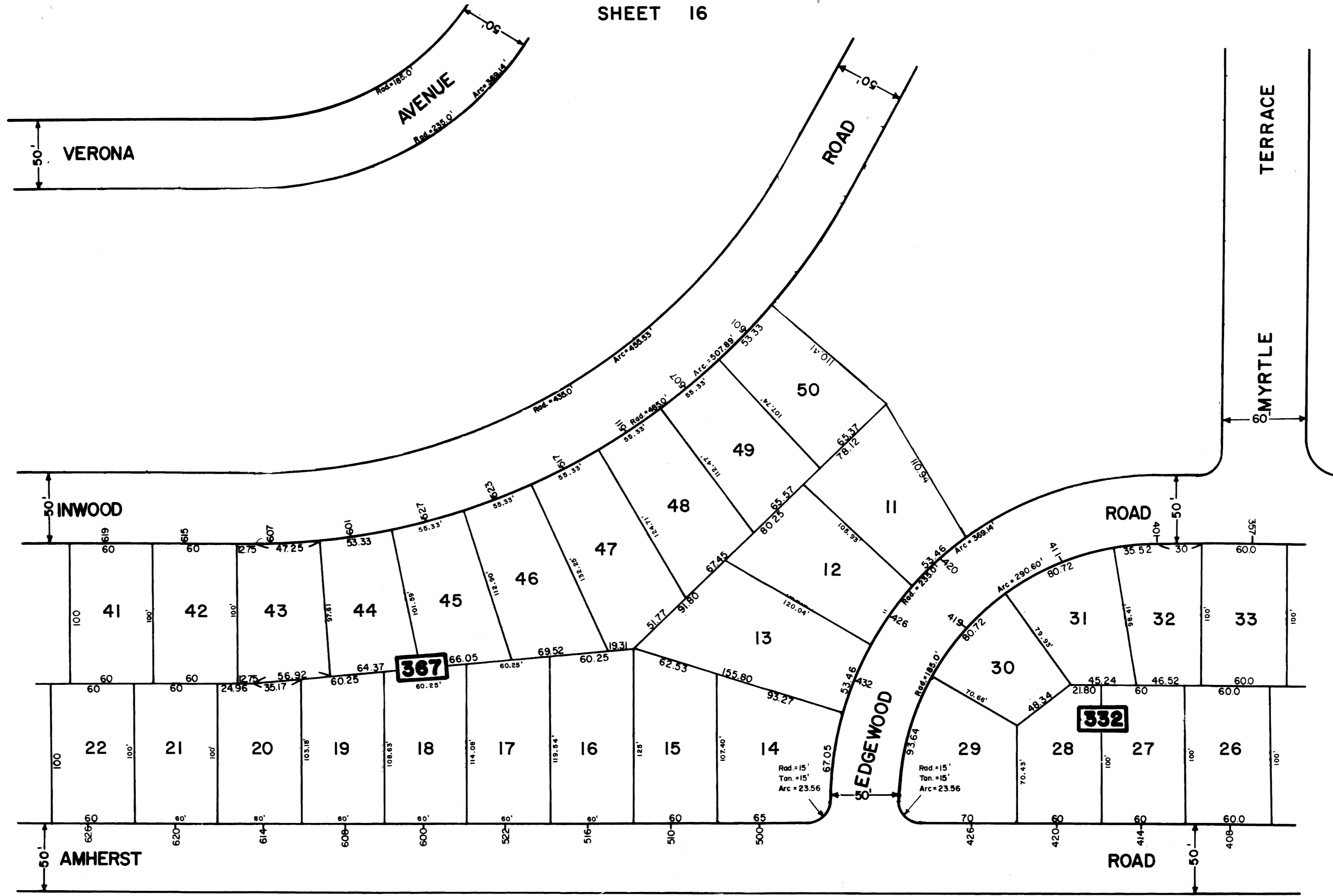


SHEET 16

SHEET 20

SHEET 22



REV.	DATE	DESCRIPTION	BY

SHEET 26

The Areas, Boundaries and Dimensions shown on this Tax Map are derived from Ground Surveys, Aerial Surveys and Recorded Plans, Maps, Deeds and W's, and are to be used for Assessment Purposes only.

NEW JERSEY DEPARTMENT OF THE TREASURY
 DIVISION OF TAXATION
 PUBLIC UTILITY TAX BUREAU
 APPROVED AS A TAX MAP PURSUANT TO THE PROVISIONS OF CHAPTER 125 LA. P. W. 1967, ETC. FOR THE DIRECTOR, DIVISION OF TAXATION
 BY *[Signature]* E. S. S.
 DATE JAN 16 1974 SERIAL No. 529

TAX MAP
 CITY OF LINDEN
 UNION COUNTY, NEW JERSEY
 SCALE: 1" = 50' DATE: FEBRUARY 1973
 JOHN A. ZIEMIAN - CITY ENGINEER
 THOMAS J. STRAPP - ASST. CITY ENGINEER